



CUSTOMER STORY

Located in Gondreville, in France, the pharmaceutical depositor Welcoop Logistique, a subsidiary of the Coopérative Welcoop, operates from a 12,000 m² warehouse. It ensures the distribution of medications and health products on both regional and national scales. Its clientele includes pharmacists, healthcare professionals, and patients at home or in outpatient care.

TARGETS

- 01 Ensure maximum productivity by replacing the historical WMS
- 02 Increase functional coverage and adopt more configurable technology
- 03 Ensuring quality and compliance

RESULTS



MORE POSSIBILITIES THANKS TO EXTENSIVE FUNCTIONAL COVERAGE



BETTER SHIPMENT MANAGEMENT WITH THE INTEGRATED TRANSPORT MODULE



IMPROVED PRODUCTIVITY

WHY SAVOYE ?

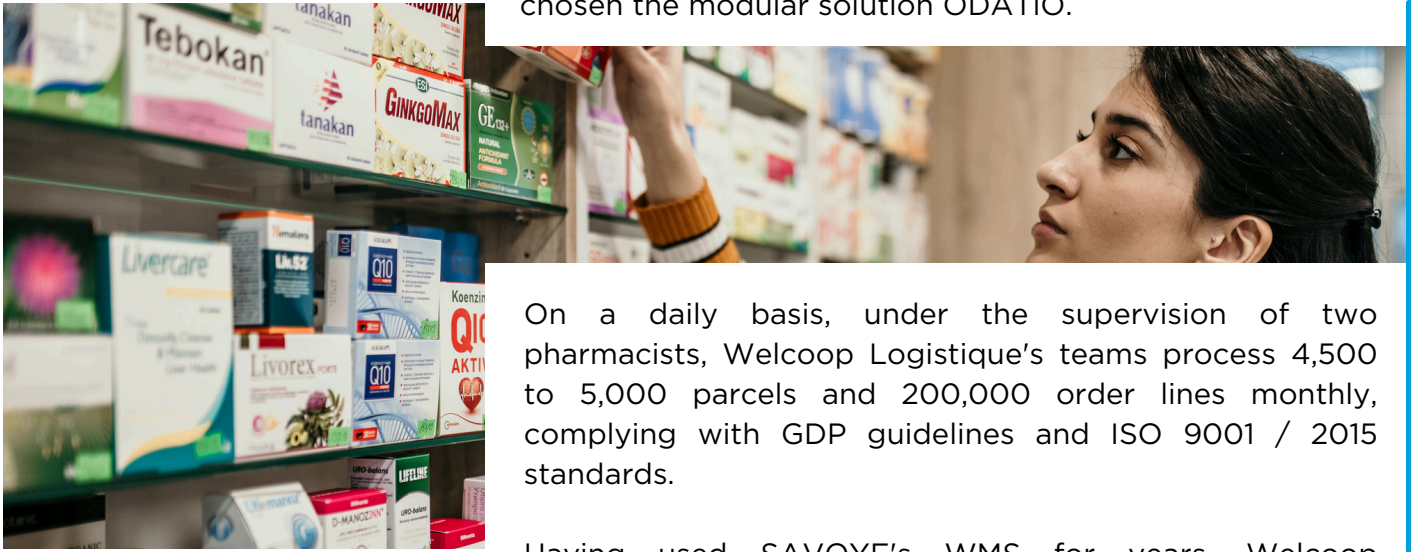
- A modular solution integrating WMS, TMS, and OMS in a single application, all in SaaS mode
- Trust and a longstanding partnership with a provider capable of supporting Welcoop in its future automation projects



Fabrice TRIMBUR
Managing Director

Evolving with a partner like SAVOYE allows us to consider various technical solutions to implement around our order preparation. The trust that unites us with our partner enables us to approach change management with our teams calmly.

For over 20 years, SAVOYE has been collaborating with Welcoop Logistique, a subsidiary of the Welcoop Cooperative. To support its evolution, this company, one of the oldest pharmaceutical distributors in France, has chosen the modular solution ODATiO.



On a daily basis, under the supervision of two pharmacists, Welcoop Logistique's teams process 4,500 to 5,000 parcels and 200,000 order lines monthly, complying with GDP guidelines and ISO 9001 / 2015 standards.

Having used SAVOYE's WMS for years, Welcoop Logistique has chosen to renew its trust by opting for ODATiO.

"Our operations are not linear and can double overnight. To address the obsolescence of our LM7 WMS and ensure maximum productivity, we chose ODATiO as it offers the flexibility and customization we need," explains Fabrice Trimbur, General Manager of Welcoop Logistique. Scheduled for completion by late 2024, ODATiO will expand functional coverage and incorporate more configurable technology. The company will also benefit from a transportation module for order assignment and grouping.

"Through ODATiO's configurations, our client can rely on more agile and scalable logistics, a crucial factor for our business evolution," adds Michel Ramos, Commercial Engineer at SAVOYE.

With a manually managed 12,000 m² warehouse potentially reaching capacity, Welcoop Logistique is considering mechanized and/or automated tools.

"Our goal is to establish a sustainable solution for the next 10 years. Partnering with SAVOYE allows us to explore various technical solutions and manage change confidently," concludes Fabrice Trimbur.

SAVOYE PRESCRIBES
AGILE AND SCALABLE
LOGISTICS FOR WELCOOP
LOGISTIQUE